

Ameron™

Contemporary Series 5S1 / 5S7 Octagonal Pole

Available in internal base plate style

Our Contemporary Series decorative base poles are ideal for street lighting, recreational areas, parking lots, walkways, and security lighting. Application can be post top or mast arm. Ameron poles are constructed with the highest quality materials and workmanship

Features and Benefits

- Prestressed steel and highest quality concrete are centrifugally cast for ultimate strength and durability.
- Natural stone and terrazzo aggregates maintain a like new appearance with virtually no maintenance.
- Conforms to applicable sections of ACI, AASHTO, ASTM, and IBC standards.
- Exclusive 10-year warranty

Colors and Finishes

A wide range of standard, pre-formulated and custom colors are available. The concrete shafts are lightly blasted to expose the texture and color of the natural stone. See separate Aggregates and Finishes sheet for details. We offer Amershield™, a premium graffiti-resistant coating, as well as other durable sealers and protectants that further enhance colors, protect the concrete surface and aid in the removal of graffiti.

Durability with a classic touch.



For further information contact us at: 1.800.552.6376



poleproducts@nov.com

nov.com/poleproducts

Ameron™ Contemporary Series 5S1 / 5S7 Pole

Top O.D.
across the flats

Internal Base Plate Style - Information

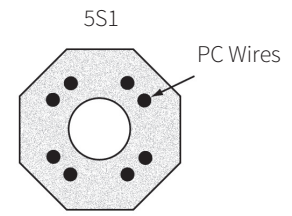
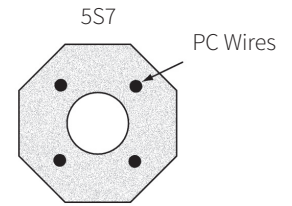
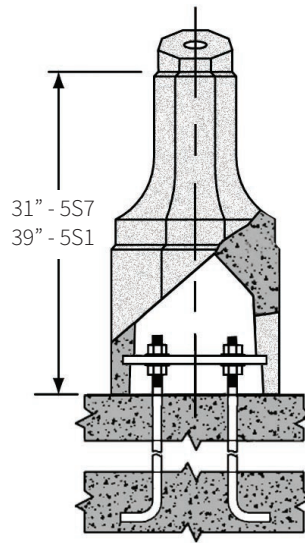
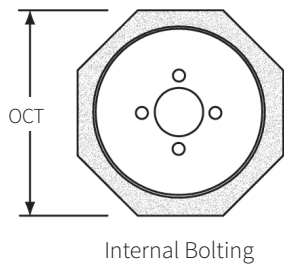
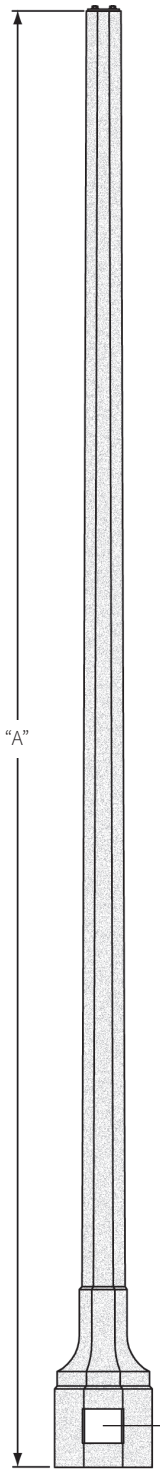
Catalog Number	Pole Height "A"	Top O.D.	Base O.D.	Anchor Bolt	Bolt Circle	Ultimate G.L. Moment (ft. lbs.)	Pole Weight (lbs.)
5S713	13'-1"	5"	16"	A449	6-1/2"	10,600	560
5S720	20'-8"	4"	16"	A449	6-1/2"	10,600	900
5S119	19'-6"	6"	20"	A449	9"	12,700	1,120
5S121	21'-6"	6"	20"	A449	9"	15,700	1,270
5S122	22'-6"	6"	20"	A449	9"	16,200	1,350
5S124	24'-0"	6"	20"	A449	9"	18,400	1,440
5S126	26'-6"	6"	20"	A449	9"	20,600	1,550
5S129	29'-0"	6"	20"	A449	9"	22,900	1,700
5S131	31'-6"	6"	20"	A449	9"	25,100	1,880

Specifications: Use Contemporary Specifications

Colors and finishes: See Contemporary Color Selection guide

Luminaire mounting: See technical-mounting options section for more information

Anti-graffiti and sealer: Optional coatings available for added protection



Shaft Cross Section Detail

For further information contact us at: 1.800.552.6376



poleproducts@nov.com

nov.com/poleproducts

© 2017 National Oilwell Varco - All rights reserved - 12606_ENG_v01